

piano

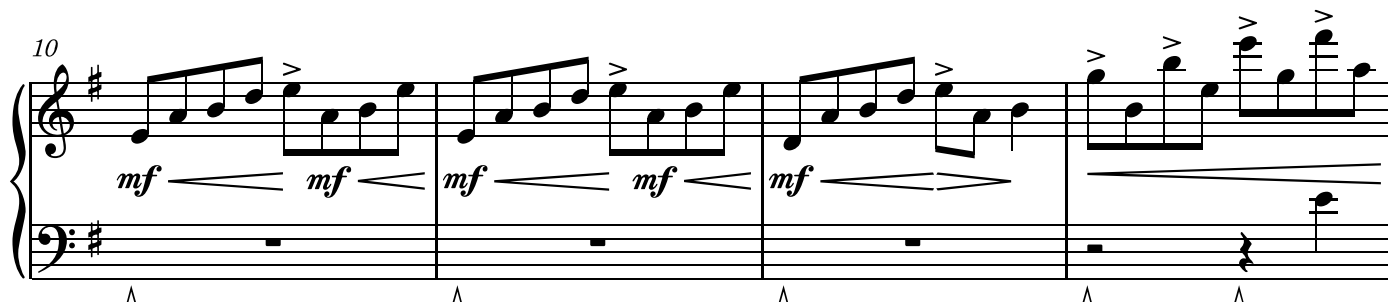
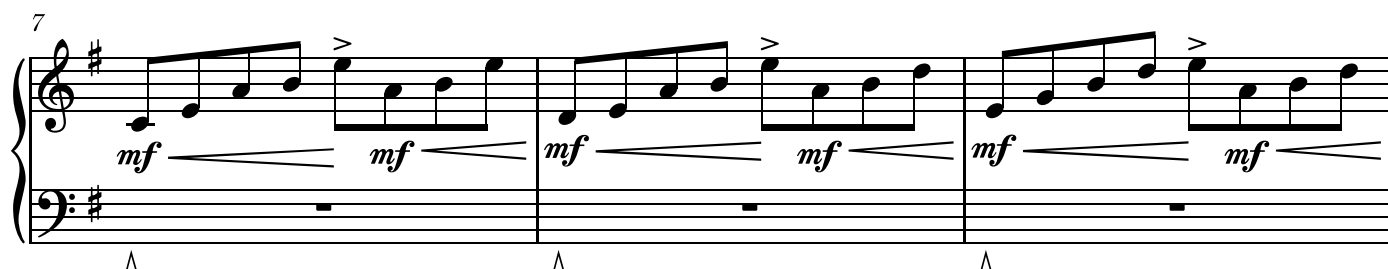
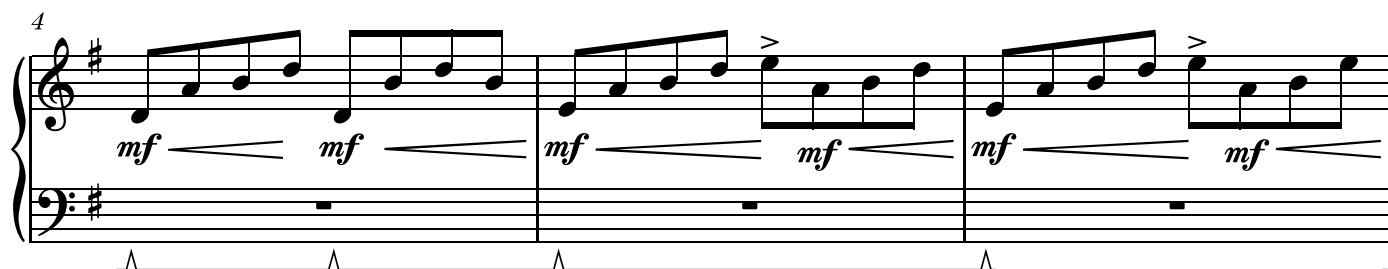
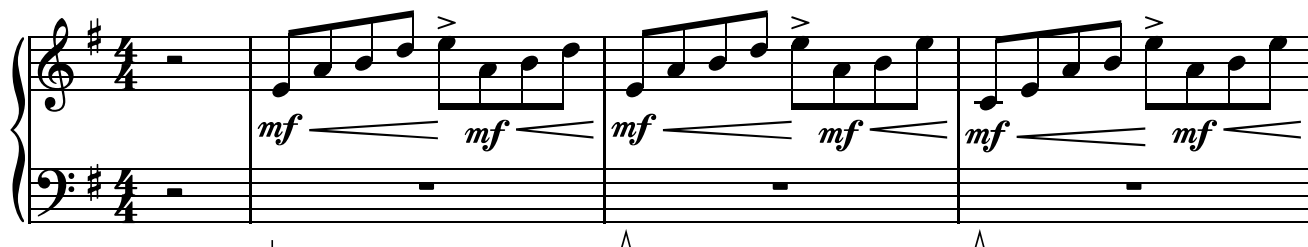
way to you

梶浦由記「Kajiura Yuki」

arranged by Ron "duVillage" van Dorp

真救世主伝説 北斗の拳「Fist of the North Star The Legends of the True Savior」

♩ = 122



14

Measures 14-18 of a piano score. The key signature is one sharp (F#). Measure 14: Treble clef has a series of eighth notes with accents (>) and a forte (ff) dynamic. Bass clef has a whole rest. Measure 15: Treble clef has a series of eighth notes with a mezzo-forte (mf) dynamic. Bass clef has a whole rest. Measure 16: Treble clef has a series of eighth notes with a mezzo-forte (mf) dynamic. Bass clef has a whole rest. Measure 17: Treble clef has a whole rest. Bass clef has a whole rest. Measure 18: Treble clef has a series of eighth notes with a forte (f) dynamic. Bass clef has a whole rest. A first ending bracket labeled '1' spans measures 17 and 18.

19

Measures 19-22 of a piano score. The key signature is one sharp (F#). Measure 19: Treble clef has a series of eighth notes with accents (>) and a mezzo-forte (mf) dynamic. Bass clef has a whole rest. Measure 20: Treble clef has a series of eighth notes with a mezzo-forte (mf) dynamic. Bass clef has a whole rest. Measure 21: Treble clef has a series of eighth notes with a mezzo-forte (mf) dynamic. Bass clef has a whole rest. Measure 22: Treble clef has a series of eighth notes with a mezzo-forte (mf) dynamic. Bass clef has a whole rest.

23

Measures 23-26 of a piano score. The key signature is one sharp (F#). Measure 23: Treble clef has a series of eighth notes with accents (>) and a mezzo-forte (mf) dynamic. Bass clef has a whole rest. Measure 24: Treble clef has a series of eighth notes with accents (>) and a mezzo-forte (mf) dynamic. Bass clef has a whole rest. Measure 25: Treble clef has a series of eighth notes with accents (>) and a mezzo-forte (mf) dynamic. Bass clef has a whole rest. Measure 26: Treble clef has a series of eighth notes with accents (>) and a mezzo-forte (mf) dynamic. Bass clef has a whole rest.